

NORTHERN NAVIGATION CO. Limited

Canadian
National
Route



Traveling East or West
The Great Lakes Cruise
Provides a Rest

Owned and Operated by Canada Steamship Lines Limited

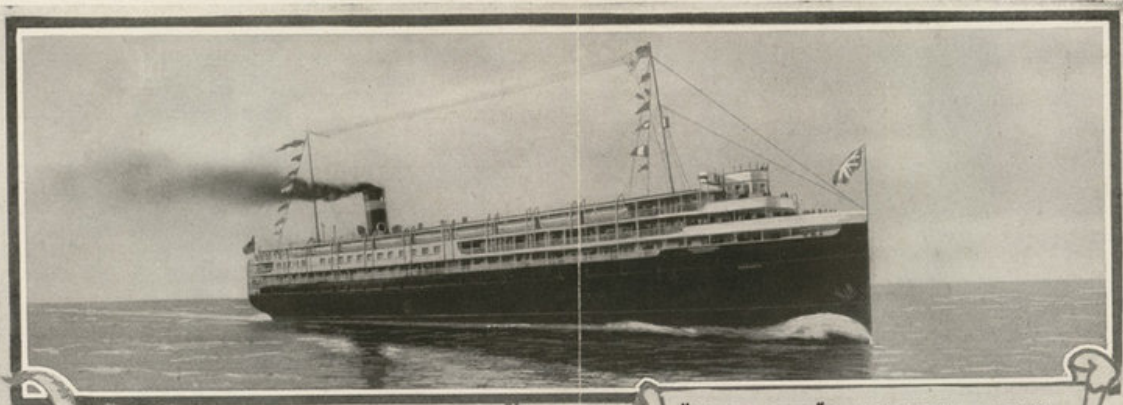
NORTHERN NAVIGATION CO. Limited

Canadian
National
Route

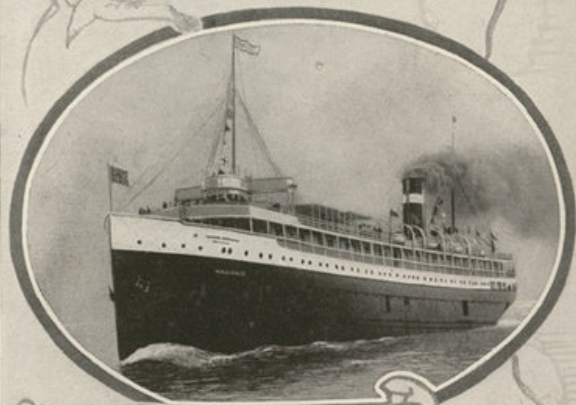


Traveling East or West
The Great Lakes Cruise
Provides a Rest

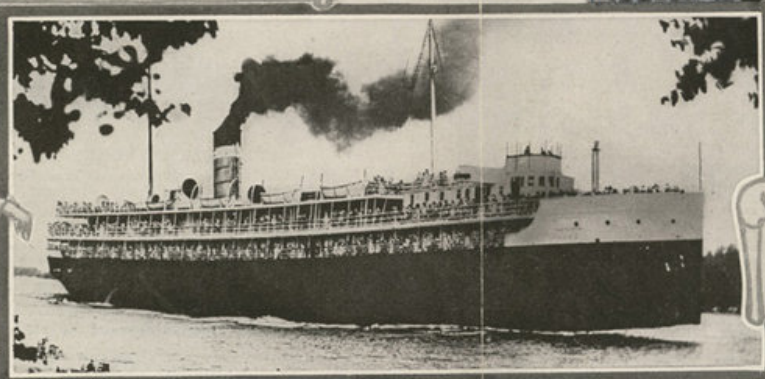
Owned and Operated by Canada Steamship Lines Limited



"S.S. NORONIC," FLAGSHIP of the FLEET,
6,905 GROSS TONS



"S.S. HAMONIC"
5,264 GROSS TONS



"S.S. HURONIC"
3,329 GROSS TONS

NAME	LENGTH	BEAM	SPEED	NO. OF CREW	DEADWEIGHT CAPACITY
"NORONIC"	385 ft.	58 ft.	18 miles	167	3200 tons requiring 1 1/2 miles of freight cars to carry
"HAMONIC"	365 ft.	50 ft.	20 miles	118	2850 tons requiring 1 3/4 miles of freight cars to carry
"HURONIC"	325 ft.	43 ft.	17 miles	96	2400 tons requiring 1 1/2 miles of freight cars to carry

1927—LAKE SUPERIOR ROUTE—1927

EASTERN STANDARD TIME

WESTBOUND—SUMMER SAILINGS

PLACE	DOCK	EARLY AND LATE			MIDSUMMER		
		Effective April 30th to June 18th, incl. Effective Sept. 13th to Oct. 29th, incl.			Effective from Detroit and Windsor, June 20th to Sept. 9th, incl. Effective from Sarnia, June 21st to Sept. 10th, incl.		
		Eastern Standard Time	S.S. Hamonic	S.S. Huronie	S.S. HAMONIC	S.S. HURONIC	S.S. NORONIC
Lv Windsor, Ont.	Gov't.	9.00 p.m.	Mon.	Fri.	Monday	Wednesday	Friday
Lv Detroit, Mich.	Brush St.	10.30 p.m.	Monday	Wednesday	Friday
Ar Sarnia, Ont.	Pt. Edward	5.30 a.m.	Tuesday	Thursday	Saturday
Lv Sarnia, Ont.	Pt. Edward	4.00 p.m.	Tues.	Sat.	Tuesday	Thursday	Saturday
Lv Sault Ste. Marie, Ont.	New Ontario	11.30 a.m.	Wed.	Sun.	Wednesday	Friday	Sunday
Ar Port Arthur, Ont.	C. N. R.	6.30 a.m.	Thur.	Mon.	Thursday	Saturday	Monday
Ar Port William, Ont.	C. P. R.	Thur.	Mon.	Thursday	Saturday	Monday
Lv Port Arthur, Ont.	C. N. R.	6.30 p.m.	Thursday	Saturday	Monday
Ar Duluth, Minn.	N. P. No. 4	(9.00 a.m.(E.T.) (8.00 a.m.(C.T.))	Friday	Sunday	Tuesday

+ Passengers are landed and received at Port Arthur, three miles distant; taxi and street car service available.

EARLY AND LATE SUMMER CONNECTIONS AT SARNIA WITH WESTBOUND STEAMER

Canadian National Railway Train leaves Toronto at 8.00 a.m., running via London, connecting with special train at Sarnia Tunnel Station to ship's side at Point Edward Dock.

AT PORT ARTHUR FOR WINNIPEG AND CANADIAN WEST
Convenient connection is made with Canadian Pacific Railway daily train leaving shortly after arrival of steamer, arriving in Winnipeg same evening.

MIDSUMMER CONNECTIONS AT SARNIA WITH WESTBOUND STEAMER

Canadian National Railway Special Steamboat Train leaves Toronto, Ont., 10.02 a.m., Tuesdays, Thursdays and Saturdays, running via Hamilton and London and arriving (ship's side) Sarnia, Point Edward Dock 3.45 p.m.

AT PORT ARTHUR FOR WINNIPEG AND CANADIAN WEST
Canadian National Railway Steamboat Train leaves Port Arthur 8.00 a.m. Eastern Time arriving Winnipeg 9.10 p.m. Central Time.

EASTBOUND—SUMMER SAILINGS

PLACE	DOCK	EARLY AND LATE			MIDSUMMER		
		Effective from Port Arthur, May 3d to June 17th, inclusive Effective from Port Arthur, Sept. 16th to Oct. 28th, inclusive			Effective from Duluth, June 24th to Sept. 13th, inclusive Effective from Port Arthur June 20th to Sept. 14th inclusive. No sailing from Port Arthur to Sarnia Wed., June 22d		
		Eastern Standard Time	S.S. Hamonic	S.S. Huronie	S.S. HAMONIC	S.S. HURONIC	S.S. NORONIC
Lv Duluth, Minn.	N. P. No. 4.	(5.30 p.m.(E.T.) (4.30 p.m.(C.T.))	Friday	Sunday	Tuesday
Ar Port William, Ont.	C. P. R.	Saturday	Monday	Wednesday
Ar Port Arthur, Ont.	C. N. R.	6.30 a.m.	Saturday	Monday	Wednesday
Lv Port Arthur, Ont.	C. N. R.	1.00 p.m.	Fri.	Tue.	Saturday	Monday	Wednesday
Ar Sault Ste. Marie, Ont.	New Ontario	8.30 a.m.	Sat.	Wed.	Sunday	Tuesday	Thursday
Lv Sault Ste. Marie, Ont.	New Ontario	10.30 a.m.	Sat.	Wed.	Sunday	Tuesday	Thursday
Ar Sarnia, Ont.	Pt. Edward	5.30 a.m.	Sun.	Thur.	Monday	Wednesday	Friday
Lv Sarnia, Ont.	Pt. Edward	Between 10.00 a.m. and noon	Monday	Wednesday	Friday
Ar Detroit, Mich.	Brush St.	4.25 p.m.	Monday	Wednesday	Friday
Ar Windsor, Ont.	Gov't.	5.15 p.m.	Monday	Wednesday	Friday

+ Passengers are landed and received at Port Arthur, three miles distant; taxi and street car service available.

EARLY AND LATE SUMMER CONNECTIONS AT PORT ARTHUR WITH EASTBOUND STEAMER

Canadian Pacific train, leaving Winnipeg Monday and Thursday evenings, makes convenient connections with steamer the following morning.

AT SARNIA FOR TORONTO
Canadian National Railway special steamboat train leaves Sarnia, Point Edward Dock (ship's side), Sundays and Thursdays connecting at Tunnel Station with regular train for Toronto.

SPECIAL NOTICE TO PASSENGERS IN EFFECT FOR MIDSUMMER SEASON

Passengers desiring to reach Toronto by noon and Ottawa and Montreal the same evening of the day of the ship's arrival in Sarnia, may do so by using a taxi at their own expense and making connections at the Tunnel Station, Sarnia, with regular train leaving at 6.30 a.m.

NOTICE: On account of the United States Coasting Laws, Detroit passengers going to Duluth, or Duluth passengers going to Detroit, must board and leave the Ships at Windsor, Ont.

Special Bus Service leaves Brush Street Dock, Detroit, at 8.00 p.m. Sailing Days, and lands passengers alongside the ship at Windsor, and the same bus service is provided for eastbound steamers from Windsor to Brush Street Dock, Detroit.

Passengers must pay their own ferry fare of five cents between Detroit and Walkerville.
Continuous Round Trip Passengers making the Seven-Day Cruise, calling at Sarnia, Sault Ste. Marie, Port Arthur and Duluth, or passengers from Detroit for Canadian Ports, or vice versa, board and leave the steamer at Brush Street Dock, Detroit.

During Early and Late Summer Sailings, an additional Freight Steamer sails from Sarnia every Thursday and from Port Arthur every Sunday on same schedule as Passenger Steamer. Full Freight Service of three sailings weekly will be continued until close of navigation.

Notice—All schedules will be adhered to as closely as possible, but the Company will not hold itself responsible for detention owing to stress of weather or other unavoidable causes; nor for delayed connections of its own steamers or others, and reserves the right to alter any schedule with or without notice.



There's Always Fun Afloat Make Your Business Trip by Boat

DETROIT, WINDSOR, SARNIA,
SAULT STE. MARIE, PORT ARTHUR,
FORT WILLIAM, DULUTH, AND RETURN

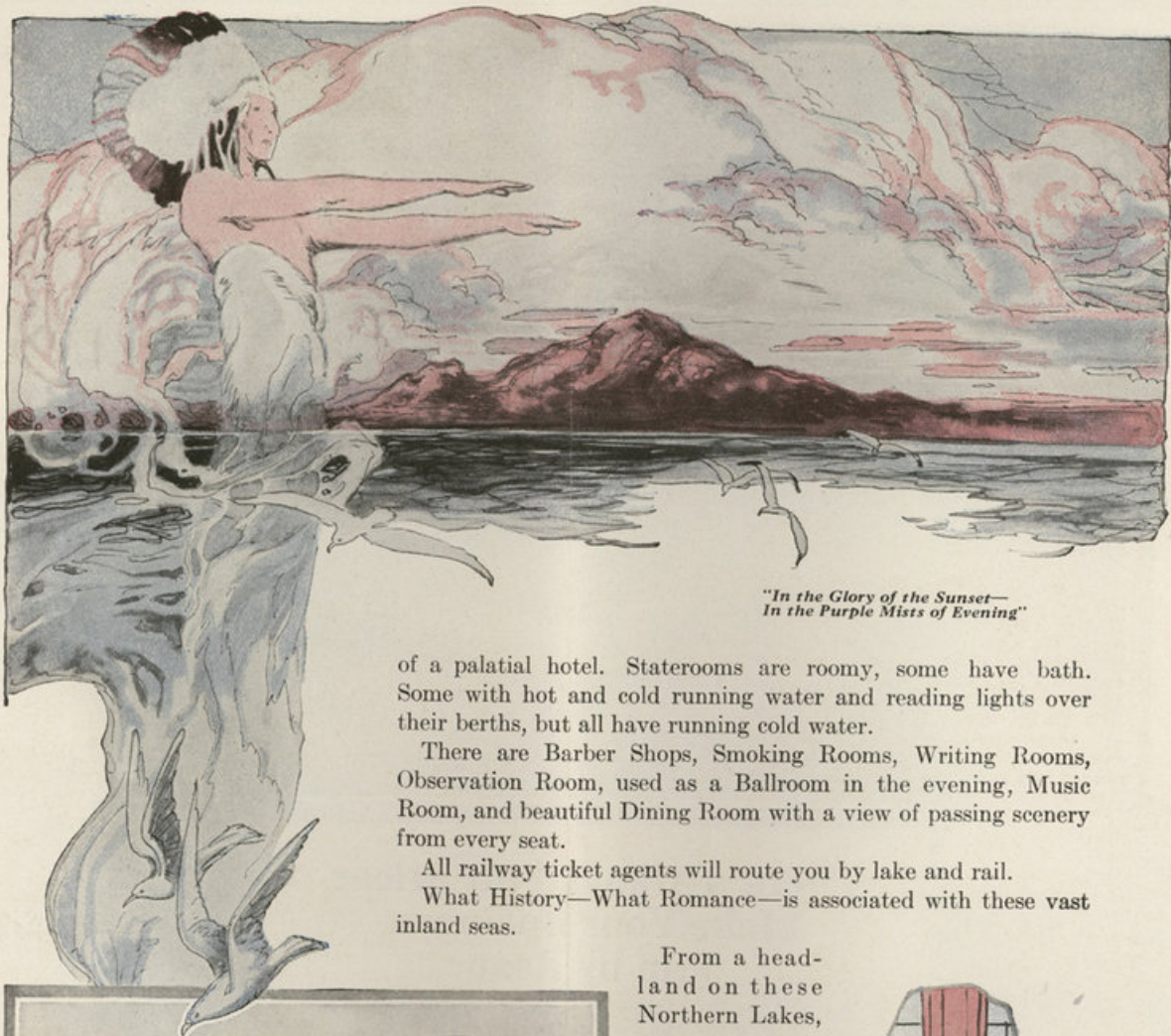


HAVE you ever travelled between the East and the West on one of the Northern Navigation Company's magnificent Great Lakes Liners? Weary, perhaps, with a long land journey, you crossed the steamer's gang-plank! And your idea of Heaven just then, was just to be cool and to sleep? Eat? Never! Just rest—just sleep!

But when the mighty steel steamer glided out into the Great Lakes—the heat of the land was forgotten. How the refreshing breezes made you sleep! How surprised you were next morning to discover that you were keenly interested in breakfast! Rest? Why you were rested. And ready, too, to enter into all the shipboard good times.

Little time is lost on these fast steamers over all-rail schedule, between East and West.

The majestic ships "Noronic," "Hamonic" and "Huronie" provide the traveller with every comfort



*"In the Glory of the Sunset—
In the Purple Mists of Evening"*

of a palatial hotel. Staterooms are roomy, some have bath. Some with hot and cold running water and reading lights over their berths, but all have running cold water.

There are Barber Shops, Smoking Rooms, Writing Rooms, Observation Room, used as a Ballroom in the evening, Music Room, and beautiful Dining Room with a view of passing scenery from every seat.

All railway ticket agents will route you by lake and rail.

What History—What Romance—is associated with these vast inland seas.

From a head-
land on these
Northern Lakes,



MT MCKAY



*Afternoon Tea
Served by the
Social Hostess*

La Salle, the gallant young explorer, saw his treasure ship, the "Griffon," set sail in 1673, for Niagara, watched her with straining eyes, until her white sails dropped below the horizon. And that was the last he ever saw of his staunch little ship which he, Tonty and Hennepin built to search for the water passage from America to China.

But, we are told, the "Griffon"—phantom ship—still sails the inland seas. Occasionally some midnight watcher glimpses her, full rigged and manned by her ghostly crew, flitting like a great white moth across the silvery way.

But of all the Lakes, the regions of Superior are the most enchanting. For this is Hiawatha's country, the land of the Algonquin, which Longfellow has made so familiar to all of us.

"In the glory of the Sunset, in the purple mists of evening," Hiawatha's soul departed to the Land of the Hereafter, but Hiawatha's massive body, turned to stone, lies dreaming in the harbor of Port Arthur.

So much for history and legend. Now about the good times of

THE GREAT LAKES CRUISE

Those desirous of spending a week's vacation on the Great Lakes may commence their journey from Detroit, Windsor or Sarnia on a Westbound Steamer; or from Duluth or Port Arthur on an Eastbound Steamer.

DETROIT—On a sultry summer evening, we watch with interest our steamer, outlined by hundreds of lights, crossing the river from Windsor to Brush St. Dock. Those who have not seen these steamers have no conception of their gigantic proportions.



Wireless Service



And Once-in-a-While the Sailors Vow—
She Sails Across the "Noronic's" Bow

portions. The "Noronic," flagship of the Fleet, has six decks and six times around her promenade deck constitute one mile.

At 10.30 p.m. our steamer is headed up the Detroit River, passes Belle Isle, crosses Lake St. Clair, and enters the St. Clair River. After a cool, invigorating sleep, we waken next morning, to find we have reached Point Edward Dock, Sarnia;

SARNIA—with its population of over 15,000 is one of the oldest towns in Ontario. In this city is located the largest petroleum refinery in the British Empire.

At 10.00 a.m. we leave, by special steamer, for Sarnia Dock, where electric cars are waiting to convey us to beautiful LAKE HURON BEACH—Not since the old school days have we enjoyed a day like this—in the woods—by the lake—dancing in the big pavilion—boating and bathing. What an opportunity at the very beginning of the cruise for this shipboard family to become acquainted. And what heaps of good things the waiters spread upon the tables in the grove, from the hampers of the ship.

Sarnia's Golf Club extends a welcome to all passengers presenting membership cards in their own Golf Club. Regular guest fees of \$2.00 per day.

Upon returning to our steamer we find that the special steamboat train from Toronto has brought passengers from Eastern Canada.

At 4.00 p.m. we set sail from Sarnia, and head north across Lake Huron towards SAULT STE. MARIE—Early next morning we sight Detour Light and enter the lovely St. Mary's River. All morning the steamer winds through the fairyland of green islands and rugged headlands, until finally we pass Sugar Island and sail through Hay Lake.

Ship Your Freight the Way You Travel



OBSERVATION ROOM & BALLROOM

During the forenoon our vessel is moored at Sault Ste. Marie, where in 1668 Pere Marquette established the first Jesuit Mission.

The Canadian "Soo" is one of the greatest Industrial Cities of the Midwest. The largest steel plant and largest paper company in the Dominion are located here.

Here, also, we pass through one of the wonders of the world, the famous "Soo" Locks, busier during navigation than the Suez Canal.

On we sail through upper St. Mary's River, over White Fish Bay, and out upon the vast waters of the world's greatest lake—"Superior." The Sleeping Giant (Hiawatha) is in full view next morning, as we glide into Thunder Bay. Here we get our first glimpse of Canada's Twin Cities—

PORT ARTHUR and FORT WILLIAM—Port Arthur boasts of having the largest consolidated grain elevator in the world. Fort William was founded as a fur-trading post in 1669.

The climate of these cities affords immediate relief to hundreds of hay-fever patients who spend a few weeks here each year.

The Thunder Bay Golf and Country Club of Port Arthur and Fort William extends a hearty welcome to golfers belonging to either clubs in Canada or United States and all playing privileges will be extended to them upon usual greens fees of \$1.50 per day or \$2.00 on Saturdays or Sundays.

One-way passengers leaving the ship here find excellent train connections for Winnipeg and Western Canada.

This day we vary our regular programme by accepting hospitality as **GUESTS OF THE CITY**—Northern Navigation passengers are invited to enjoy the most unique experience. Special street cars will convey our party at 10.00 a.m. from Port Arthur to Chippewa Park, where the city of Fort William has prepared for us an enjoyable "CAMP DINNER."



Dancing
Every Week-Day
Evening



BEAUTIFUL DINING ROOM, "S.S. NORONIC"
SEATS 272 PEOPLE

The city of Fort William has recently secured from the Chippewa Indian Nation, a vast tract of their reserve for CHIPPEWA PARK—The westward march of the crowded nations has passed by this "forest primeval." Extending for three miles along the picturesque shores of Thunder Bay, this glorious stretch of forest is as primitive today as when the first Paleface set foot upon the south bank of the beautiful Kamanistiquia River, which at this point flows into the bay. The grandeur of the hills and mountains of this almost landlocked bay are truly awe-inspiring. From our woodland table we behold the "Sleeping Giant," the "Welcome Islands" and the picturesque island "Pie" across the spreading waters.

Legend and tradition hold that here upon these shores stood the lodge of old "Nokomis," Hiawatha's mother; that here, to his wigwam, the deliverer of his people brought his bride, the "Laughing Water" from the land of the "Dacotahs."

Bathhouses and boathouses have been established along the shore, and the fine sandy, shallow bay provides a delightful bathing beach.

After the "Camp Dinner" the ship's orchestra provides music for dancing in the rustic pavilion, or there is plenty of time to wander along the network of shady forest trails, where we come across, at intervals, members of the Park Zoo—buffalo, wolves, bears, raccoons and birds, enclosed amid their natural surroundings.

ONE-WAY OR ROUND-TRIP PASSENGERS travelling to or via Duluth are entitled, without extra charge, to the day's outing at Chippewa Park, which includes transportation and "Camp Dinner" at the Park. If coupons covering these special features are not attached to tickets, please apply to the Purser's Office on the ship for them.

Street cars leave at 2.45 p.m. for the steamer—landing at Port Arthur—it taking one hour to make the trip. Steamer leaves at 6.30 p.m. for Duluth.

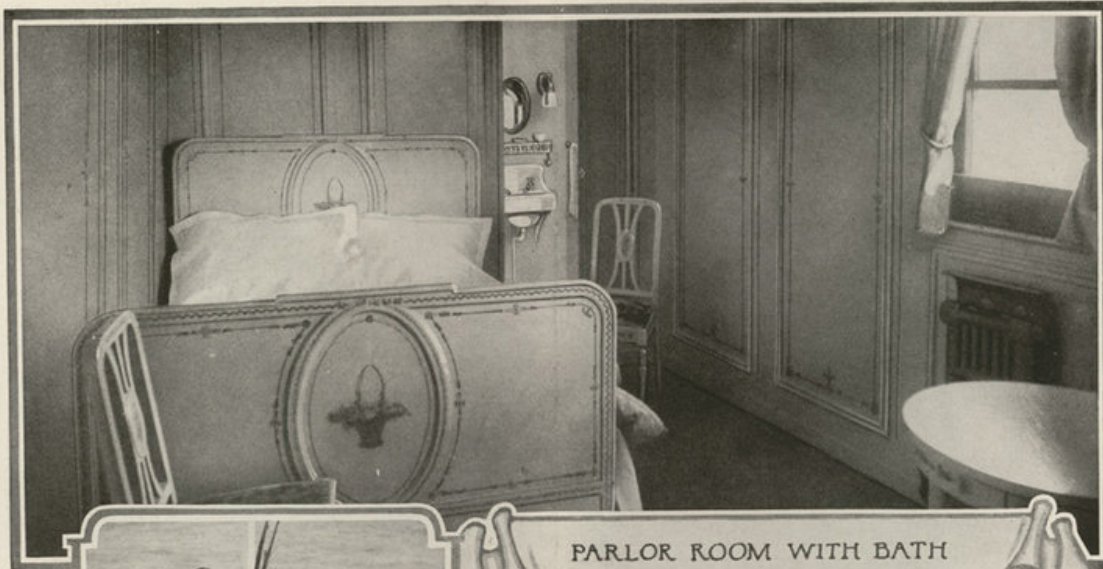


View of
Passing Scenery
from Each Seat



PICNIC GROUNDS, SARNIA

For a Holiday Choose—Our Seven-Day Cruise



PARLOR ROOM WITH BATH



MOCK MARRIAGE
ON BOARD



"HERE STOOD HIAWATHA'S WIGWAM
BY THE SHORES OF GITCHE GUNEE
BRIGHT BEFORE IT BEAT THE WATER
BEAT THE SHINING BIG-SEA WATER"

DULUTH—When other cities are sweltering in midsummer heat, Duluth, high on her terraced hillside, fanned by Superior's breezes, is ever cool and inviting.

Duluth's fifty or more parks, of pines, red and gray rocks, waterfalls, rapids, and sparkling streams, are just as Nature made them.

THE BOULEVARD DRIVE—For continuous round-trip passengers from the east, automobiles will leave the steamer's dock at 10.00 a.m. (E.T.), for a two-hour-and-twenty-minute drive around Duluth's wonderful Boulevard, four hundred feet above the level of the lake, overlooking the city and its harbor, and including a visit to Morgan Park and the famous Ore Dock.

Duluth's port is second in tonnage to New York alone. The Aerial Bridge is the only structure of its kind in America. Duluth has the world's greatest iron fields at its back door and is the new steel centre of the world.

Duluth's Northland Country Club extends a welcome to Golfers belonging to Clubs associated with the United, the Western, or the Royal Canadian Golf Associations, upon presenting "Membership Cards." Guest fees, \$3.00 per day.

Our steamers make convenient

On This Finest of Tours—"The Ship Is Yours"



MILE MARCH—SIX TIMES AROUND THE PROMENADE DECK, LED BY BAG-PIPES AND DRUMS.

and quick connections at Duluth with trains bound for Western Canada, St. Paul, Minneapolis or other points in the Western States.

In the evening we commence our voyage to the east, following the same route, except that the scenes through which we pass in the night going northward, we review by day returning.

SPECIAL FEATURES

DANCING—Every week-day evening. Community singing and music by the ship's orchestra. Refreshments at its close. *Northern Navigator*—Daily paper issued on shipboard. *Thé Dansant*—Tea served by Social Hostess in Grand Saloon. Music for dancing on the Observation Deck. *Concerts*—Every evening. *Social Hostess*—Devotes her energies to the entertainment of the ship's guests. *Mile March*—Six times around the Promenade Deck after breakfast and before dinner, headed by the Bag-pipes and Drums. *Picnic*—At Lake Huron Beach, near Sarnia. *Chippewa Park*—Guests of the city of Fort William at a "Camp Dinner" in their great natural park. *At Duluth, Sight-Seeing Tour*—Time occupied, two hours and twenty minutes—distance, 35 miles.

MR. AND MRS. GOLFER—While traveling on our steamers enjoy the many opportunities for golf—at Sarnia, Port Arthur and Duluth. The Clubs in these cities extend to you a welcome and the schedule of the steamers is so arranged that you may enjoy three days of golf. Bring your clubs and all arrangements will be made aboard the steamer for you by our Golf Representative.



GRAND SALOON—DECK 3

Traveling East or West—Our Boats Provide a Rest

SHIPS PROGRAMME

WESTBOUND

(Eastern Standard Time)

EASTBOUND

ITINERARY	DAY AT SARNIA	DAY PASS-ING SOO	DAY AT PT. ARTHUR and FT. WILLIAM	DAY AT DULUTH	ITINERARY	DAY AT FT. WILLIAM and PT. ARTHUR	DAY AT SOO	DAY AT SARNIA
BREAKFAST.....	7:00 to 9:00	7:00 to 9:00	6:00 to 9:00	7:00 to 9:00	BREAKFAST....	7:00 to 9:00	7:00 to 9:00	6:00 to 9:00
MILE-MARCH MUSIC.....	None	10:30 a.m.	None	None	MILE-MARCH MUSIC.....	None	10:30 a.m.	None
MORNING EVENTS.....	Beach Picnic, Dancing, Bathing, Boating, Golf Ashore	St. Mary's River Scenery, Canadian Locks	Golf Ashore, Chippewa Park, Dancing, Bathing	Boulevard Drive	MORNING EVENTS.....	Sight-Seeing, Hike to Mt. McKay	Canadian Locks, St. Mary's River Scenery <i>Passengers may leave steamer at locks, enjoy an auto drive and meet steamer at dock.</i>	Automobile Drive at Sarnia (Not Included in Ticket)
LUNCH..... (Dancing in Pavilion)	In the Picnic Grove at Noon	11:30 to 2:00	Camp Dinner Noon Chippewa Park	Aboard Steamer	LUNCH.....	11:30 to 2:00	11:30 to 2:00	12:00 to 2:00
AFTERNOON HAPPENINGS..	Sight-Seeing and Shopping	Upper St. Mary's River and Whitefish Bay	Golf Ashore, Chippewa Park, Roaming	Golf Ashore, Sight-Seeing and Shopping	AFTERNOON HAPPENINGS..	View of Sleeping Giant and Peeping Squaw	St. Mary's River Scenery	St. Clair River Flats, Lake St. Clair, Detroit River
THE DANSANT.. (Sunday—Afternoon Tea Only)	4:00 p.m.	4:00 p.m.	None	None	THE DANSANT.. (Sunday—Afternoon Tea Only)	4:00 p.m.	4:00 p.m.	Dancing 2:30 to 4:00 Arrival of Boat at Detroit
MILE-MARCH MUSIC.....	5:00 p.m.	5:00 p.m.	None	None	MILE-MARCH MUSIC.....	5:00 p.m.	5:00 p.m.	
DINNER MUSIC.....	6:30 to 7:30	6:30 to 7:30	6:30 to 7:30	6:30 to 7:30	DINNER MUSIC.....	6:30 to 7:30	6:30 to 7:30	
CONCERT DANCING, REFRESHMENTS. (No Dancing Sundays)	8:30 to 11:00	8:30 to 11:00	8:30 to 11:00	8:30 to 11:00	CONCERT DANCING, REFRESHMENTS. (No Dancing Sundays)	8:30 to 11:00	8:30 to 11:00 Masquerade	
LIGHTS OUT....	Midnight	Midnight	Midnight	Midnight	LIGHTS OUT....	Midnight	Midnight	

FACTS ABOUT THE SHIPS

NAME OF SHIP	No. SEATS DINING ROOM	No. CORRIDOR ROOMS		No. CABIN ROOMS	No. SALOON ROOMS	No. PARLOR WITH BATH	TOTAL		RUNNING WATER		BERTH READING LIGHTS	<i>Single Berths for one person 30 inches wide; Double Berths for two persons 42 inches across. Upper berths are single berths and have a ladder to assist in getting in and when the ladder is drawn into place, it provides protection from rolling out.</i>
		Inside	Outside				Outside	Outside	No. BERTHS	No. ROOMS		
HURONIC	90	91	63	26	19	1	179	90	Yes	No	No	
HAMONIC	166	91	23	25	19	8	324	166	Yes	Yes	No	
NORONIC	272	93	52	92	34	10	552	281	Yes	Yes	Yes	

An Auto Suggestion

Motorists touring across Canada or the United States will find it a delightful and restful change by planning to take part of this journey by boat. The "Noronic," "Hamonic" and "Huronic" have large and spacious decks for car



AUTOMOBILES

Automobiles will be carried when all gasoline has been removed and the batteries disconnected. Passengers travelling with automobiles must make arrangements with Northern Navigation Company's agent beforehand, at starting point, otherwise the Company will not guarantee to carry car on same steamer as passenger.

Sizes of steamers' gangways: "Noronic": height 7 feet 3 inches, width 7 feet 1½ inches; "Hamonic": height 6 feet 1 inch, width, 7 feet 0 inches; "Huronic": height 6 feet 2 inches, width 6 feet 6 inches.

storage and give special freight rates.

Plan your trip to reach the shore ports of Windsor, Sarnia, Sault Ste. Marie, Port Arthur or Duluth.

Motor cars are not loaded or unloaded at Detroit, Mich.

Special Freight Rates

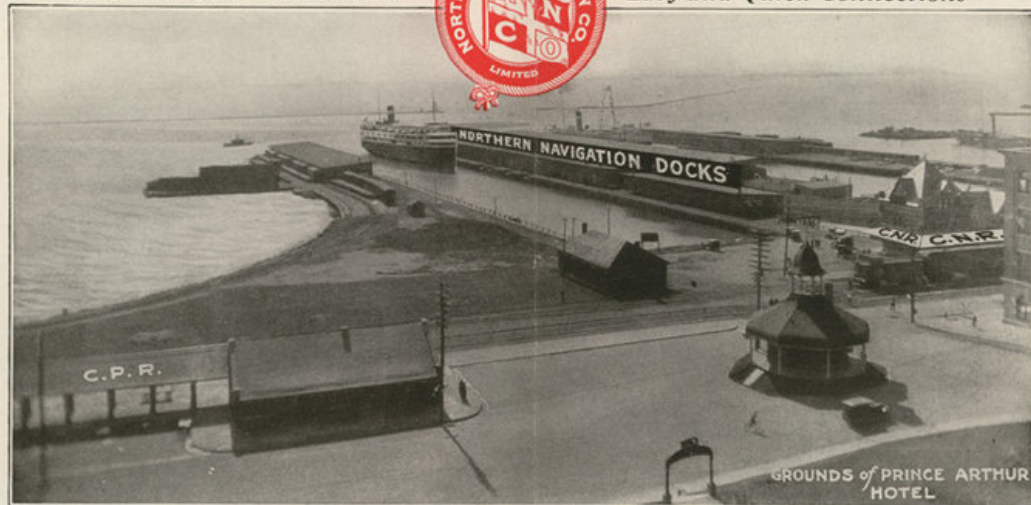
When Accompanied by Two or More Passengers

Between Windsor and Sault Ste. Marie (Including Wharfage).....	\$17.00
Between Windsor and Port Arthur (Including Wharfage).....	29.75
Between Windsor and Duluth (Including Wharfage).....	34.00
Between Sarnia and Sault Ste. Marie (Including Wharfage).....	16.25
Between Sarnia and Port Arthur (Including Wharfage).....	29.75
Between Sarnia and Duluth (Including Wharfage).....	34.00
Between Sault Ste. Marie and Port Arthur (Including Wharfage).....	15.50
Between Sault Ste. Marie and Duluth (Including Wharfage).....	18.00
Between Port Arthur and Duluth (Including Wharfage).....	9.75

Tickets Must Not Be Issued for These Charges

At Ports in Both Directions

Easy and Quick Connections



PORT ARTHUR TERMINAL

Both C. N. R. and C. P. R. Depots, you will see, are but a few steps from the Northern Navigation Docks. At all connecting points passengers will find convenient change from boat to train or from train to boat

GENERAL INFORMATION

News Stand

A news stand is maintained on each steamer, where magazines, souvenir postcards, candy, cigars, etc., may be purchased.

As this stand is maintained for the accommodation of the Company's patrons the prices charged will be found reasonable.

Dining-Room Hours

Breakfast, Special.....	6 a.m., days arriving Port Arthur and Sarnia
Breakfast, Regular.....	7:00 to 9:00
Luncheon.....	11:30 to 2:00
Dinner.....	5:30 to 7:30

Choice of Route

Passengers travelling between Eastern and Western Canada may have their tickets routed either via Port Arthur or Duluth. The latter, at a small additional cost, gives them an extra day on the water.

Passengers from Winnipeg and West, holding round-trip tickets, travelling via Port Arthur to points in Eastern Canada, may without extra transportation charge have their tickets routed via Windsor or Detroit to destination.

Customs and Immigration

Passengers boarding the steamer at Detroit for Canadian points pass the Canadian Customs Officer at Brush Street Dock, and the Canadian Immigration Officer at Sarnia. Passengers boarding the steamer at Canadian points for Duluth pass the United States Customs and Immigration Officers at Duluth. Passengers boarding the steamer at Duluth for Canadian points pass the Canadian Immigration Officer on the Duluth Dock and the Canadian Customs at Port Arthur. Passengers boarding the steamer

at Port Arthur, Ont., Sault Ste. Marie, Ont., or Sarnia, Ont., for Detroit, pass the United States Customs and Immigration Officers who are on board the steamer en route from Sarnia to Detroit.

Passengers from the United States travelling through Canada should have their checked baggage examined by Canadian Customs Officers at the border, otherwise their baggage will be held at the border, and thus cause delay and inconvenience.

Baggage from Duluth, destined to United States points and passing through Canada, will be sealed on request of passenger by Customs Authorities at starting point, and bonded through Canada to avoid necessity of examination at border.

United States baggage for interior Canadian points where Customs Officers are located can be bonded on board the steamers, and examined at destination, if desired.

Mail for Passengers

May be addressed in care of the following:

Detroit, Mich.....	Northern Nav. Co., Brush St. Dock
Sarnia, Ont.....	Northern Navigation Company
Sault Ste. Marie, Ont.....	New Ontario Dock
Port Arthur, Ont.....	Northern Navigation Company
Duluth, Minn.....	Northern Navigation Company

Give name of passenger, name of steamer (when known), date of sailing, and direction bound. State whether mail is to be held until called for or to be forwarded if received too late to catch steamer. Ample time for delivery should be allowed and sender's address should always be shown on envelope.

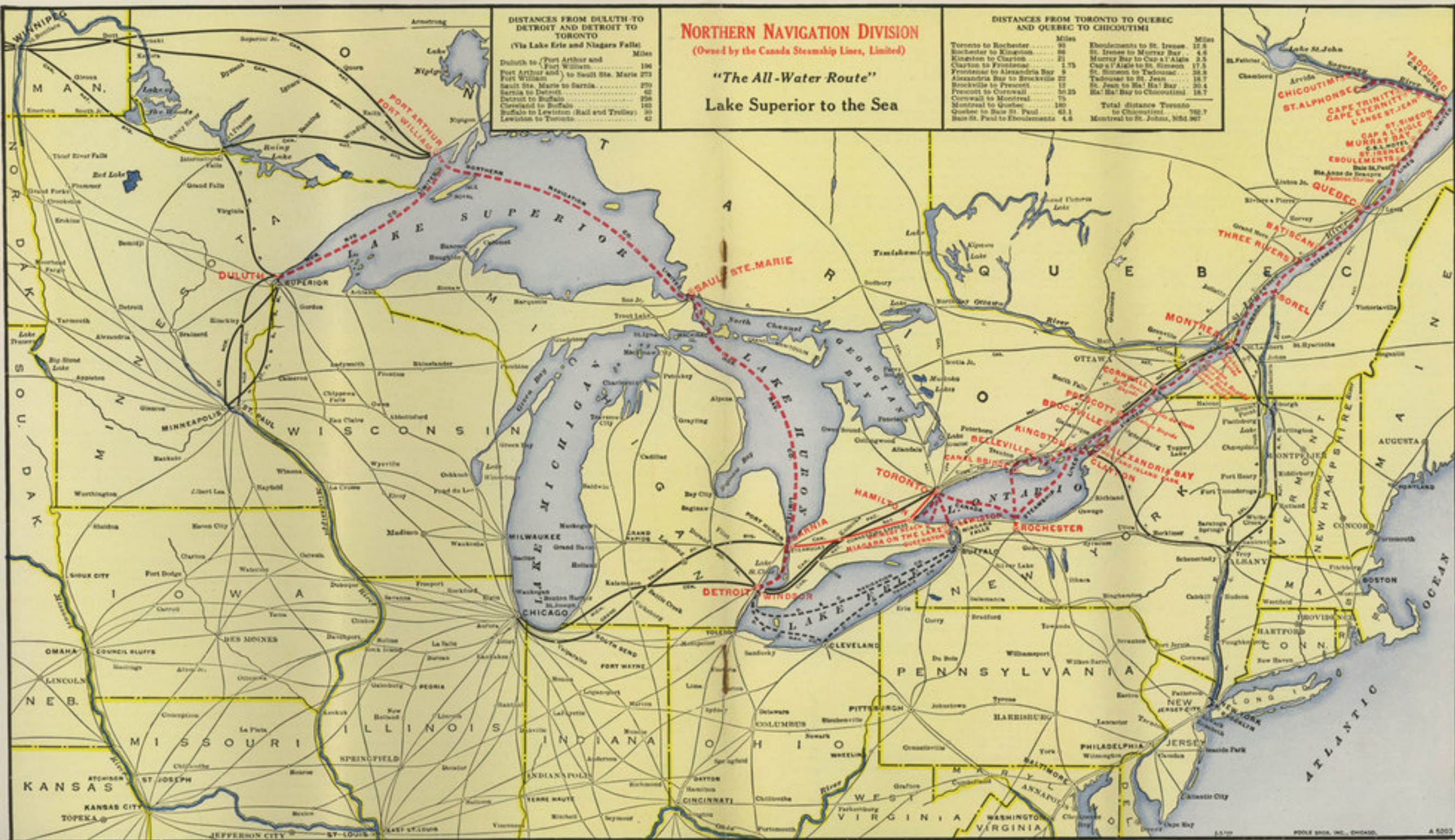
Example:

MR. JOHN JONES,

Care of Northern Navigation Co., SARNIA, Ont.

Passenger on S. S. Noronic, leaving Sarnia, July 10.

If undelivered, return to Henry Smith, Woodward Ave., Detroit, Mich.



GENERAL STATEROOM RESERVATION OFFICES

Communicate with the Agent of the Company at addresses given below:

For Westbound Trip

From Points in Ontario, Michigan, Ohio and eastern states, apply to General Passenger Agent, Detroit, 313 Dime Bank Building, Sault Ste. Marie, Ont., 555 Queen Street; Toronto, Ont. (Local), Canadian National Railway or Canada Steamship Line City Ticket Offices.

For Eastbound Trip

From Points in Manitoba and Western Canada, apply to General Passenger Agent, Winnipeg; Port Arthur, Ont., 8 Cumberland Street; Fort William, Ont., 110 North May Street. From Points in Minnesota and western states, apply to Duluth, 430 West Superior Street, St. Paul and Minneapolis; Minn. (Local), 518 Second Avenue, Minneapolis.

STATEROOM INFORMATION

Staterooms Are Priced According to Location

Meal and berth tickets are issued to cover meals in the dining room and one berth in a stateroom.

The steamer's sleeping capacity is usually overtaxed during the Tourist Season (June 15th to September 15th) and during this period it is necessary to secure "berths in advance," otherwise the Company will only promise to supply "cots in the open cabin" for which they will collect the minimum berth charge.

Application for stateroom space may be made by any Railway Ticket Agent or to the Company's Ticket or Reservation Offices. Stateroom space may only be purchased when transportation tickets are in possession of the applicant.

It is expected that two persons will occupy each stateroom, viz., one in the upper berth and one in the lower berth, and in rooms where there is a sofa in addition to two berths, the Company reserves the right to put a third person in the room but agrees not to put a third person in any room occupied by man and wife, unless the third person be a member of their family.

To secure the exclusive use of one whole stateroom two adult transportation tickets and two adult meals and berth tickets are required to be purchased.

Parlors will only be sold on payment of two adult transportation fares and two adult parlor meal and berth fares. A deposit of \$5.00 on corridor, cabin or grand saloon berths or \$25.00 for a parlor room, when made with the Ticket Agent, will hold the reservation to within seven days of sailing. If the transaction is then not completed, the deposit is forfeited and the space resold.

Requests for reservations should be made by letter as far in advance as possible.

Requests for staterooms should specify the kind of berth required, such as upper or lower berth in inside or outside corridor room; upper or lower berth in cabin room; upper or lower berth in saloon room.

On account of liability of error in the transmission of requests for reservations, when wiring for stateroom space, add the word, "Man" or "Woman," as the case may be. For example: "Reserve lower inside corridor berth Port Arthur Soo Hamonic August first John Smith man."

Or

"Reserve inside corridor berths same room Port Arthur Soo Hamonic August first John Smith and wife man and woman."

Or

"Reserve lower inside corridor berth Port Arthur Soo Hamonic August first Mary Smith woman and cabin berths Soo Sarnia Noronic August third Mary and Ellen Smith two women."

Or

"Reserve lower cabin berths separate rooms Port Arthur Soo Hamonic August first John and Mary Smith man and woman."

Reservation offices will prepay replies to prepaid telegrams or reply by collect telegrams to collect requests, as the Company will only pay telegraph messages for reservations in one direction.

If request for stateroom space is made by a patron of the line, the reservation office will offer available stateroom space to the patron, advising its cost, also the transportation cost for the trip required and will hold the space offered for sufficient time to permit reply by letter accepting the accommodation and enclosing the remittance to cover. If request for stateroom space is made by a ticket agent, the reservation office will offer available stateroom space and he will be expected to issue tickets to cover the space and advise the reservation office within a reasonable time, the form and number of the meal and berth ticket only.



TICKET INFORMATION

Refunds

Application for refunds should be made to the General Passenger Agent at Detroit, Mich., or Winnipeg, attaching the unused portion of tickets to the application, with full explanation as to why refund is desired.

Claim for refund should be made before the close of the year in which the ticket is issued.

No refund will be allowed on meals and berth tickets unless cancellation is received at the reservation office where the reservation was made, 48 hours before the sailing of the steamer.

Full refund will be allowed on unused one-way transportation tickets.

On unlimited round-trip tickets used one way refund will be allowed by charging the one-way fare, the balance accruing as refund to the applicant.

Lost

As soon as a patron finds he has lost his ticket, he should immediately communicate with the General Passenger Agent, who will bulletin the ticket in an endeavor to prevent its being used by any other person.

Passengers are expected to keep tickets in their possession as receipt for fare paid, but are required to surrender same to Ticket Collector on leaving steamer.

If the ticket is lost the Company requires that the fare be paid again and undertakes to refund the extra fare collected upon presentation of the lost ticket by the original purchaser.

Stop-Overs

Stop-over privileges at any port of call will be granted upon application to the Purser on all transportation tickets (except cruise tickets), but no stop-over will be issued on any meals and berth ticket showing through reservation. The holder of any meals and berth ticket showing through reservation stopping off at an intermediate port forfeits the unused portion and no part of such unused meals and berth ticket will apply to a subsequent trip or be accepted for refund.

General

Continuous round-trip passengers from Duluth to Detroit are entitled to their supper on the steamer while at Windsor.

All passengers from Detroit and Windsor are entitled, without extra charge, to the picnic at Lake Huron Beach, Sarnia, Ont.

All westbound passengers travelling to or beyond Duluth are entitled to the picnic and camp dinner at Chippewa Park, Fort William.

Continuous round-trip cruise passengers only are entitled, without extra charge, to the Boulevard Drive at Duluth. Round-trip cruise passengers between Duluth and Port Arthur are not entitled to the Boulevard Drive nor to the picnic at Fort William.

Passengers travelling on special round-trip rate between Duluth and Port Arthur are not entitled to luncheon on steamer at Port Arthur or Duluth.

In the event of any disagreement with the Company's Agents or Purser relative to tickets, charges, privileges, etc., passengers should accept the Agent's or Purser's ruling, taking proper receipt for money paid and refer the matter to the General Passenger Agent for adjustment. Agents and Purser have no discretionary power in such matters, but are governed by rules which they are not authorized to change.

Purchasers of tickets should see that same are stamped with official stamp of selling agent and that they read to destination desired.

Children

Children under five years of age, when accompanied by an adult, will be carried free, except when taken to dining room, when a charge will be made for the trip as follows:

Between Sarnia and Sault Ste. Marie	\$2.00
Between Sarnia and Port Arthur	4.00
Between Sarnia and Duluth	5.00
Between Sault Ste. Marie and Port Arthur	2.00
Between Sault Ste. Marie and Duluth	3.00
Between Port Arthur and Duluth	1.00
Between Detroit and Sarnia	1.75
Between Detroit and Sault Ste. Marie	2.75
Between Detroit and Port Arthur	4.75
Between Detroit and Duluth	5.75

Tickets must be secured from Purser before entering the dining room.

Children five years of age and under twelve will be charged half the transportation fare and half the meals and berth fare.

A child holding half-fare ticket must occupy berth with adult. This rule is rigidly enforced.

LOCAL PASSENGER TARIFF 1927

MEALS AND BERTH EXTRA DURING ENTIRE SEASON

IMPORTANT NOTICE: The Coasting Laws of the United States do not permit Canadian Ships to carry passengers between United States ports.

TICKET AGENTS SHALL NOT ISSUE TICKETS—ONE WAY OR SEASON ROUND TRIP—BETWEEN DETROIT AND DULUTH

It is **not** a violation of the United States Coasting Laws for a passenger to make a **continuous** round trip on the same steamer between Detroit and Duluth, but it **is** such a violation for passengers holding one way or season round-trip tickets to make such trips between these points and such passengers must board or leave the ship at Windsor, Ontario; for their convenience a large, comfortable bus will leave Brush Street Dock, Detroit, every Monday, Wednesday and Friday at 8 p.m. direct to ship's side, Windsor, and bus will leave ship's side, Windsor, on arrival of steamer every Monday, Wednesday and Friday, for Brush Street Dock, Detroit. For this service there will be a charge of 5 cents to cover ferry fare.

White Star Line steamers from Detroit will accept Northern Navigation coupons reading Windsor to Sarnia.

BETWEEN DETROIT, MICH., or WINDSOR, ONT., and	Corridor Berth		Cabin Berth		Grand Saloon Berth		Parlor Room for 1 or 2 Persons	
	One-way	Return	One-way	Return	One-way	Return	One-way	Return
Sarnia, Ont.								
Transportation Fare.....	\$ 1.25	\$ 2.50	\$ 1.25	\$ 2.50	\$ 1.25	\$ 2.50	\$ 2.50	\$ 5.00
Meals and Berth Rate.....	† 1.50	3.00	† 1.50	3.00	† 1.50	3.00	10.00	20.00
Sault Ste. Marie, Ont.								
Transportation Fare.....	16.00	28.80	16.00	28.80	16.00	28.80	32.00	57.60
Meals and Berth Rate.....	6.00	12.00	8.50	17.00	10.50	21.00	32.00	64.00
Port Arthur, Ont.								
Transportation Fare.....	28.00	50.40	28.00	50.40	28.00	50.40	56.00	100.80
Meals and Berth Rate.....	11.00	22.00	16.00	32.00	20.00	40.00	62.00	124.00
Duluth, Minn. Continuous Round-Trip								
Transportation Fare.....	32.00	57.60	32.00	57.60	32.00	57.60	64.00	115.20
Meals and Berth Rate.....	11.50	23.00	16.50	33.00	20.50	41.00	73.00	146.00
SARNIA, ONT., and								
Transportation Fare.....	15.25	27.45	15.25	27.45	15.25	27.45	30.50	54.90
Sault Ste. Marie, Ont.								
Transportation Fare.....	28.00	50.40	28.00	50.40	28.00	50.40	56.00	100.80
Meals and Berth Rate.....	10.00	20.00	15.00	30.00	19.00	38.00	60.00	120.00
Port Arthur, Ont.								
Transportation Fare.....	32.00	57.60	32.00	57.60	32.00	57.60	64.00	115.20
Meals and Berth Rate.....	11.50	23.00	16.50	33.00	20.50	41.00	73.00	146.00
SAULT STE. MARIE, ONT., and								
Transportation Fare.....	12.75	23.50	12.75	23.50	12.75	23.50	25.50	47.00
Port Arthur, Ont.								
Transportation Fare.....	15.00	27.00	15.00	27.00	15.00	27.00	30.00	54.00
Meals and Berth Rate.....	10.00	20.00	15.00	30.00	19.00	38.00	60.00	120.00
PORT ARTHUR, ONT., and								
Transportation Fare.....	6.00	▲ 9.80	6.00	9.80	6.00	9.80	12.00	19.60
Duluth, Minn.								
Meals and Berth Rate.....	5.00	10.00	7.50	15.00	9.50	19.00	30.00	60.00

ALL FARES SUBJECT TO FOLLOWING CONDITIONS

All fares quoted herein are direct line fares only. 1 Berth not included southbound.

Meals and berth tickets must not be sold unless transportation ticket is presented by passenger.

Round-trip meals and berth tickets may be sold in connection with round-trip transportation tickets, but only when positive return reservation has been secured.

Where three people occupy room together the charge for the third person will be at the minimum rate.

▲ Special round-trip fares will be in effect between Duluth and Port Arthur during summer schedule. From Port Arthur to Duluth going and returning on the same steamer, and from Duluth to Port Arthur going on one steamer and returning on the next westbound steamer, round-trip fare, including meals and berth in corridor or cabin room, is \$15.00. Berths in saloon or parlor rooms to be charged at regular tariff rate.

CLASSIFICATION OF ROOMS

Parlor Rooms

- S. S. "Noronic"—A-B-C-D-E-F-G-H-I-J—consisting of double bed, wardrobe and bathroom.
- S. S. "Huronie"—A-B-C-D-E-F-G-H—consisting of double bed, wardrobe and bathroom.
- S. S. "Huronie"—Official Suite—consisting of sitting room, bedroom and bathroom.

Saloon Rooms

- S. S. "Noronic"—401 to 434 inclusive.
 - S. S. "Huronie"—I-J-K-L-M-N-O-P-Q-R-S-U-V-W-X-6-18-28-41.
- Saloon rooms are all extra large outside rooms on the Grand Saloon Deck.

Cabin Rooms

- S. S. "Noronic"—18 to 32 inclusive; 34; 36 to 42 inclusive; 44; 435 to 454 inclusive; 501 to 548 inclusive.

- S. S. "Huronie"—20 to 27 inclusive; 29; 31 to 35 inclusive; 37; 40; 42 to 50 inclusive.
- S. S. "Huronie"—60 to 85 inclusive.

Cabin rooms are all outside rooms in preferred location.

Corridor Rooms

- S. S. "Noronic"—1 to 12 inclusive; 14 to 17 inclusive; 43; 45 to 62 inclusive; 64; 455 to 468 inclusive; 470; 472; 101 to 112 inclusive; 114 to 162 inclusive; 164; 211; 214 to 224 inclusive; 227 to 244 inclusive; 246.
 - S. S. "Huronie"—1 to 5 inclusive; 7 to 12 inclusive; 14; 15; 17; 19; 51 to 58 inclusive; 101 to 112 inclusive; 114; 115; 117 to 135 inclusive; 137; 140 to 158 inclusive; 208; 210 to 212 inclusive; 214 to 229 inclusive; 231 to 235 inclusive; 237; 240 to 251 inclusive.
 - S. S. "Huronie"—14 to 59 inclusive; 86 to 102 inclusive.
- Corridor rooms consist of outside and inside rooms except on the steamer "Huronie," where they are all outside rooms.

Pack Your Grip



And Take This Trip

H. B. SMITH, President, Toronto, Ont.
T. R. ENDERBY, General Mgr., Montreal, Que.
J. I. HOBSON, Treasurer, Montreal, Que.
H. B. THOMPSON, Secretary, Montreal, Que.
H. H. GILDERSLERVE, District Manager, Toronto, Ont.

C. C. BONTER, Passenger Traffic Manager, Montreal, Que.
F. D. GOGGHEGAN, General Freight and Passenger Agent, Detroit, Mich.
R. CRAWFORD, General Passenger Agent, Winnipeg, Man.

J. C. RANDALL, General Freight and Passenger Agent, New York, N. Y.
B. BATTEN, General Agent, Fort William, Ont.
G. H. SHANKS, Agent, Sault Ste. Marie, Ont.
D. J. BURKE, District Freight and Passenger Agent, Windsor, Ont.
C. A. SKOG, Western Agent, 430 W. Superior St., Duluth, Minn.

Representatives, Ticket Agents-Northern Navigation Company and Canadian National Railways

BUFFALO, N. Y.—H. M. Morgan, G. A. P. D. Can. Nat.-G. T. Ry., 11 S. Division St., Elliott Square; Consolidated Ticket Office, Underhill Bldg.; American Express Co., Main and Erie Sts.
BALTIMORE, MD.—International Mercantile Marine Co., 308 N. Charles St.; Fidelity Trust Co., Travel Dept.; American Express Co.
BRANDON, MAN.—Chambers, Ticket Agent, C. N. R. Station.
BRANTFORD, ONT.—J. T. O'Neill, City Passenger and Ticket Agent, Canadian National Railways, 135 Colborne St.
BOSTON, MASS.—G. C. Fletcher, District Freight and Passenger Agent, Northern Navigation Co., 216 Old South Bldg.; H. F. Tilley, General Agent, Passenger Dept., Can. Nat.-Grand Trunk Ry., 333 Washington St.; Thos. Cook & Son, 167 Tremont St.; Raymond Whitecomb Co., 165 Tremont St.; Geo. E. Marsters, 248 Washington St.; American Express Co., 333 Washington St.; Colditz Tourist Agency, 282 Washington St.
BROOKLYN, N. Y.—Universal Tours, 359 Fulton St.; Standard Tours, 50 Court St.; Alfred Bernheim & Sons, 963 Broadway; Brooklyn Travel Bureau, 215 Montague St.
BERKELEY, CALIF.—Crabtree's Travel Office, 2121 Shattuck Ave.
CALGARY, ALTA.—J. H. Norton, City Ticket Agent, Canadian National Railways, 218 8th Ave. West.
CHICAGO, ILL.—M. F. Doyle, District Freight and Passenger Agent, Northern Navigation Company, 112 W. Adams St.; C. N. R. Station; Western Passenger Agent, Can. Nat.-Grand Trunk Ry., 108 W. Adams St.; American Express Co., 70 E. Randolph St.; Thos. H. Cook & Son, 350 N. Michigan Ave.; Raymond Whitecomb Co., 72 E. Jackson Blvd.
CINCINNATI, OHIO—N. R. McAlister, District Freight and Passenger Agent, Northern Navigation Co., 117 Dixie Terminal Arcade; F. H. Bremner, General Agent, Can. Nat.-Grand Trunk Ry., 406-407 Traction Bldg.; Fifth Third National Bank of Cincinnati, Steamship Ticket Dept.; Cosmopolitan Tours, Dixie Terminal Arcade; American Express Co., Travel Dept., First National Bank.
CLEVELAND, OHIO—D. Keddle, General Agent, Northern Navigation Company, 940 Chester Ave., Union Trust Bldg.; Akers, Folkman & Lawrence, 1903 S. E. Ninth St.; H. G. Pentland, Passenger Agent, Can. Nat.-Grand Trunk Ry., 925 Euclid Ave.; Collier-Miller Co., 2051-53 E. Ninth St.; American Express Co., 1003 Huron Rd.; S. O. Clark, Agent, D. & C. Navigation Co., E. Ninth St. Pier.
COLUMBUS, OHIO—City National Bank, Steamship Ticket Dept.
DAYTON, OHIO—Dayton Savings Bank & Trust Co., City National Bank.
DULUTH, MINN.—C. A. Skog, Western Agent, Northern Navigation Co., 430 W. Superior St.; P. A. Rooney, City Passenger Agent, Can. Nat.-Grand Trunk Ry., 430 W. Superior St.
DETROIT, MICH.—Ticket and Reservation Office, Nor. Nav. Co., 312-313 Dime Bank Bldg. and Brush St. Dock; C. Leidligh-First National Travel Bureau, 150 Lafayette Bldg.; H. L. McCaughy, General Agent, Passenger Dept., Can. Nat.-G. T. Ry., 1229 Griswold St.; Kirby Travel Bureau, 1449 Broadway; Ticket Agent, White Star Line, Foot of Griswold St.; American Express Co., 23 W. Fort St.; Ticket Agent, D. & C. Nav. Co., Third St. Dock; Potter's Travel Bureau, 131 Lafayette Blvd. and General Motors Bldg.
EDMONTON, ALTA.—J. Madill, District Passenger Agent; J. S. Peck, City Passenger Agent, Canadian National Ry., corner Jasper and 100th St.
FORT WILLIAM, ONT.—Jarvis Agency; E. Marino; J. E. Arnold, Ticket Agent, Canadian National Ry., C. N. R. Station.
GUELPH, ONT.—G. E. Walker, City Passenger and Ticket Agent, Canadian National Ry., 11-13 Wyndham St.
GRAND RAPIDS, MICH.—C. A. Justin, City Passenger Agent, Can. Nat.-Grand Trunk Ry., 151 Ottawa St.; The Travel Bureau, 127 Ottawa St.
HALIFAX, N. S.—H. C. McFarlane, District Passenger Agent; J. J. Leydon, City Passenger Agent, Canadian National Ry., 107 Hollis St.
HAMILTON, ONT.—P. J. Peer, Dist. Passenger Agent, Northern Navigation Co.; James Anderson, C. P. T. A., Can. Nat. Ry., 7 James St., North.
INDIANAPOLIS, IND.—Union Trust Co., 120 E. Market St.; American Express Co., 32 S. Meridian St.; Fletcher American Co.
KANSAS CITY, MO.—L. E. Ayer, General Agent, Can. Nat.-Grand Trunk Ry., 706 Grand Ave.
KINGSTON, ONT.—J. P. Hanley, City Passenger and Ticket Agent, Canadian National Ry., corner Johnston and Ontario Sts.
LONDON, ONT.—R. E. Ruse, City Passenger and Ticket Agent, Canadian National Ry., 406 Richmond St.
LOS ANGELES, CALIF.—H. R. Bullen, General Agent, Canadian National-Grand Trunk Ry., 607 So. Grand Ave.; Thos. Cook & Son, 515 S. Spring St.; Raymond Whitecomb Co., 509 Spring St.; American Express Co., 724 S. Olive St.
LOUISVILLE, KY.—Liberty Insurance Bank; First National Bank.
MILWAUKEE, WIS.—The City Bank of Milwaukee, Travel Dept., Second St., between Grand Ave. and Wells.
MINNEAPOLIS, MINN.—A. H. Davis, General Agent, Passenger Dept., Northern Navigation Co., 518 S. Second Ave.; G. A. North, City Passenger Agent, Northern Navigation Co., 518 S. Second Ave.
MONTREAL, QUE.—D. Olivier, District Passenger Agent, Northern Navigation Co., 1000 V. B. Square; J. P. Marion, District Passenger Agent, Canadian National Ry., Bonaventure Station; M. O. Datoe, City Passenger Agent, Canadian National Ry., 230 St. James St.; Thos. Cook & Son, 530 St. Catherine St.; Canada Steamship Lines Ticket Office, Windsor Hotel and Mount Royal Hotel.

C. D. GEORGE, Trav. Frt. and Pass. Agent, Sarnia, Ont.
C. H. J. BOWDEN, Traveling Freight and Pass. Agent, Montreal, Que.
H. A. YOUNG, Traveling Freight and Passenger Agent, Sarnia, Ont.
W. PIERCE, Soliciting Freight Agent, Windsor, Man.
F. McCAMBRIDGE, Dist. Frt. and Pass. Agt., Calgary, Alta.
D. MacINTYRE, Soliciting Freight and Passenger Agent, Port Arthur, Ont.
A. A. McDONALD, District Freight and Passenger Agent, Regina, Sask.
C. A. MOORE, Soliciting Freight Agent, 909 Credit Union Bldg., Vancouver, B. C.
L. A. W. DOHERTY, Freight Traffic Manager, Montreal, Que.
L. J. BURNS, Assistant Freight Traffic Manager, Toronto, Ont.
E. W. HOLTON, General Freight Agent, Toronto, Ont.
F. J. WARRIN, General Freight Agent, Winnipeg, Man.
J. H. MORRISON, Superintendent, Sarnia, Ont.
J. E. ADAMS, Chief Commissary, Sarnia, Ont.
M. CUSSEIN, General Traffic Auditor, Montreal, Que.
N. W. VAN VLYCK, General Purchasing Agent, Montreal, Que.
JAS. EDWARDS, General Claims Agent, Montreal, Que.
E. S. SMILEY, Western Claims Agent, Winnipeg, Man.

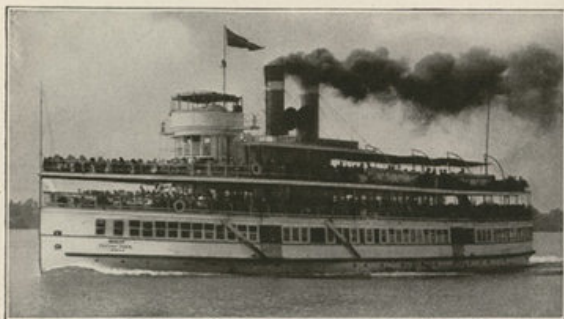
NEWARK, N. J.—American Express Co., 876 Broad St.
NEW YORK, N. Y.—L. P. Beaudin, City Passenger Agent, Northern Navigation Co., 119 W. Fort Second St.; C. E. Jenney, General Agent, Passenger Dept., Canadian National-Grand Trunk Ry., 505 Fifth Ave.; Geo. E. Marsters, Prince George Hotel, 14 East 28th St.; American Express Co., 65 Broadway, 200 Fifth Ave., 565 Fifth Ave., 118 W. 39th St.; Raymond Whitecomb Co., 625 Fifth Ave., 606 Fifth Ave.; Thos. Cook & Son, 585 Fifth Ave., 253 Broadway; Frank Tourist Co., 542 Fifth Ave.; Gillespie, Kinports and Beard, 8 W. 40th St.
NORTH BAY, ONT.—W. E. G. Bishop, District Passenger Agent; C. W. Murphy, City Ticket Agent, Can. Nat. Ry., 81 Main St.
NORTH BATTLEFORD, SASK.—C. O. Taylor, Ticket Agent, Can. Nat. Ry.
OTTAWA, ONT.—P. M. Butler, General Agent, Passenger Dept.; I. G. Reece, City Passenger Agent, Can. Nat. Ry., 93 Sparks St.
OAKLAND, CALIF.—Crabtree's Travel Office, 1325 Broadway.
PETERBORO, ONT.—J. B. Doran, City Passenger and Ticket Agent, Can. Nat. Ry., 324 George St.
PORTLAND, ME.—G. Harrison, Gen. Agt., Pass. Dept., Can. Nat. Ry., Grand Trunk Station.
PRINCE ALBERT, SASK.—L. J. Davis, Ticket Agent, Canadian National Ry., C. N. R. Station.
PORTLAND, ORE.—B. Holthrop, City Pass. Agent, 122 3d St.
PRINCE RUPERT, B. C.—R. F. McNaughton, District Passenger Agent, Canadian National Ry., 528 3d Ave.
PORT ARTHUR, ONT.—S. W. Ray, Ticket Agent, Northern Navigation Co., 8 Cumberland St.; W. W. Martin, Ticket Agent, Canadian National Ry., C. N. R. Station.
PITTSBURGH, PA.—R. E. Garrison, District Freight and Passenger Agent, Northern Navigation Co., 195 Union Trust Bldg.; W. J. Burr, General Agent, Passenger Dept., Can. Nat.-Grand Trunk Ry., Park Bldg., 355 Fifth Ave.; First National Bank, Steamship Dept.; Mellon National Bank, 502 Smithfield St.; American Express Co., 347 Fourth Ave.; Steamship Dept., Diamond National Bank, Fifth Ave. and Liberty St.
PHILADELPHIA, PA.—A. J. Conklin, General Agent, Geo. B. Canvin, City Passenger Agent, Northern Navigation Co., 202 Liberty Bldg., Chestnut and Broad Sts.; American Express Co., 1708 Chestnut St.; Raymond Whitecomb Co., 1333 Walnut St.; Thos. Cook & Son, 730 S. 15th St.; G. L. Bryson, City Passenger Agent, Can. Nat.-Grand Trunk Ry., 1500 1506 Chestnut St.; Gillespie, Kinports & Beard, 210 S. 17th St.; Travel Dept., Fourth St. National Bank; Frank Tourist Co., 1529 Locust St.
QUEBEC, QUE.—M. P. Connolly, General Agent, Northern Navigation Co.; J. E. LeBlanc, District Passenger Agent, Canadian National Ry., 10 St. Anne St.; Canada Steamship Line Ticket Office, Chateau Frontenac.
REGINA, SASK.—S. M. Greene, City Tkt. Agt., Can. Nat. Ry., 1874 Seath St.
ROCHESTER, N. Y.—W. E. Cloney, Gen'l Agt., Nor. Nav. Co., 705 Temple Bldg.
SASKATOON, SASK.—W. D. MacIntyre, District Passenger Agent, A. F. Lenon, City Ticket Agt., Can. Nat. Ry., 103 Second Ave. South.
SEATTLE, WASH.—J. F. McGuire, General Agent, Passenger Dept.; Can. Nat.-Grand Trunk Ry., 1329 Fourth Ave.
SAN FRANCISCO, CALIF.—W. J. Gilkinson, General Agent, Passenger Dept., Can. Nat.-Grand Trunk Ry., 689 Market St.; American Express Co., Market St. at Second St.; Thos. Cook & Son, 128 Sutter St.; Raymond Whitecomb Co., 657 Market St.
SHERBROOKE, QUE.—A. M. Stevens, City Passenger and Ticket Agent, Canadian National Ry., 23 Wellington St., North.
SARNIA, ONT.—Northern Navigation Co., Phone 535.
ST. CATHERINES, ONT.—C. J. Harris, City Passenger and Ticket Agent, Canadian National Ry., 106 St. Paul St.
SAULT STE. MARIE, ONT.—General Insurance Agency.
ST. LOUIS, MO.—W. H. Burke, General Agent, Can. Nat.-Grand Trunk Ry., 408 Olive St.; American Express Co., Ninth and Locust Sts.; Rudolph Travel Bureau, Bank Bldg., 1000 Olive St.
ST. PAUL, MINN.—A. H. Davis, Gen'l Agt., Pass. Dept., Nor. Nav. Co., 83 E. Fifth St.
SPRINGFIELD, OHIO—American Trust & Savings Bank.
TOLEDO, OHIO—C. C. Cunningham, Guardian Trust & Savings Bank, Steamship Dept.
TORONTO, ONT.—J. R. Beck, District Passenger Agent, Northern Navigation Co., 46 Yonge St.; R. E. Richmond, City Ticket Agent, Canadian National Ry., King and Yonge Sts.; Canada Steamship Lines' Ticket Office, King Edward Hotel; J. J. MacIntyre, District Passenger Agent, Canadian National Ry., Union Station; Thos. Cook & Son, 65 Yonge St.
VANCOUVER, B. C.—K. E. McLeod, District Passenger Agent; W. G. Connolly, City Passenger Agent; Robert Hay, City Ticket Agent, Canadian National Ry., 127 Georgia St.; Thos. Cook & Son, 723 Georgia St.
VICTORIA, B. C.—C. F. Earle, District Passenger Agent, Canadian National Ry., 911 Government St.
WALKERVILLE, ONT.—Nor. Nav. Co., Walker's Dock, Phone Burnside 22.
WINNIPEG, MAN.—J. J. MacIntyre, District Passenger and Ticket Agent, Canadian National Ry., 24 Sandwich St., East.
WINNIPEG, MAN.—R. Crawford, General Passenger Agent, Nor. Nav. Co., 234 Portage Ave., W. J. Quinlan, District Passenger Agent, Canadian National Ry., 177 Main St.; E. J. Creighton, City Passenger Agent, C. Tindall, City Ticket Agent, Canadian National Ry., Main and Portage Ave.
WASHINGTON, D. C.—Obers Tours, 1420 H. St. N. W.; American Express Co.

Tickets—Reservations—Information at All Railway Ticket or Tourist Offices



Hamonic Passing under Duluth Aerial Bridge

Two Delightful Day Trips from Detroit



S. S. "Thousand Islander"

To Wallaceburg

Have you ever sailed through Indian Land? Across Lake St. Clair, through the United States Ship Canal, past the cottage-dotted flats, into the St. Clair River, down the Snye Carte (Lost Channel), past the Indian Reservation on Walpole Island, and up the Sydenham River to Wallaceburg? A haunted house; a huge mound, the grave of Indian warriors killed in long-ago Indian wars; a quaint old Indian ferry—These are some of the interesting things you see on this trip to Wallaceburg. Dancing. Orchestra.

To Chatham

Leaving Detroit, the "Thousand Islander" passes Belle Isle, and entering Lake St. Clair cruises along the South Shore until the tall stone lighthouse more than a hundred years old, at the mouth of the Thames River, comes in sight. Up the Thames, the steamer winds for twenty miles through real country, past modern farmhouses, fields of growing grain and shadowed stretches where heavy foliage droops into the water. You should take this trip this summer. Dancing. Orchestra.

Full information at Company's office, 312 Dime Bank Building, Detroit, Michigan.

THE EMPLOYEES' SERVICE PLEDGE

We believe in our Company and its Affiliations, our Ships and our Individual and Collective Ability to serve our Patrons, their Appreciation being our Great Reward.

Believing that our **Patrons Pay Our Salaries** and that the Company's success depends on Cheerful, Prompt, Efficient Service and the "Never-Too-Much-Trouble" Spirit, we declare that:

We will demand and observe courteous discipline—intelligently explain and teach our subordinates—be interested in small details—orderly in our work—clean and neat in our personal appearance—cheerfully carrying out all responsibilities placed upon us—always remembering the necessity of "Safety First."

We will be courteous to the public and to each other, doing what we would expect to be done for us were we in their places—Extend a warm and polite welcome—Anticipate the Wants of and never Argue with Patrons, as we are dead wrong from their point of view—Remember New Patrons are Old Patrons in the making and not forget that "The Ship Is Their Home" and we their Servants.

TIP TALK

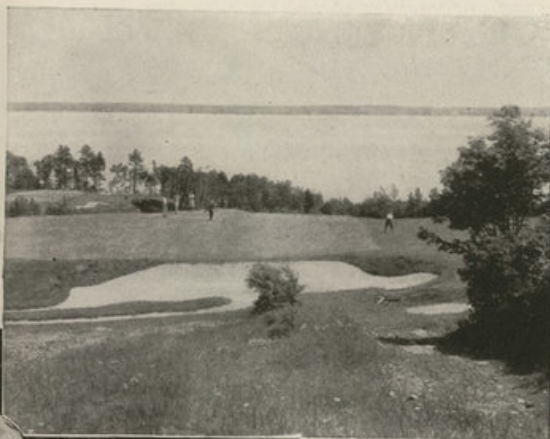
Gratuities are not necessary to Secure Good Service, as that is paid for when the ticket is purchased. If patrons desire to tip, feeling that they have received special or extra intelligent service, do so, but be reasonable.



The "Hotel Tadousac," Tadousac, P. Q., Lower St. Lawrence River, Most Charmingly Located Family Summer Hotel on the Continent



The "Manoir Richelieu," Murray Bay, P. Q., on the Lower St. Lawrence River, the Most Popular Summer Resort Hotel in Eastern Canada



Never a Dull Moment at Murray Bay or Tadousac



Save Time and Money

*Ship via Northern Navigation Company-
Canadian National Route*

*Via Port Arthur, Ont.
or Fort William, Ont.*



Sarnia, Ont., Freight Terminal

ONE glance at the map on pages 12 and 13 of this folder shows why you save time by having shipments routed via Northern Navigation Company's steamers. Our fast passenger steamers, running on scheduled time (39 hours, Sarnia to Port Arthur), are supplemented in the East by the shortest and quickest rail connections between Eastern Canada and New England and Trunk Line Territories, and in the West by railroads serving all points in Western Canada. Rail, Lake and Rail service via the Northern Navigation Company represents a saving in time and money.

A Genuine Saving in Rates

SAVING

Another really big advantage of using the Canadian National, Lake and Rail Route is the lower rate which this service offers.

in favor of Lake and Rail, as compared to All Rail:

Class	Saving per 100 lbs.	Class	Saving per 100 lbs.
1st.....	25c	5th.....	.6c
2d.....	20c	6th, 7th,	
3d.....	14c	8th, 10th	5c
4th.....	10c		

Merchandise Cars Operated from Principal Points by All Connections

Special merchandise cars, covering less than carload shipments—in other words, offering “carload service” to “less than carload shippers”—are operated from principal cities on all our connections.

In Canada, daily merchandise cars are operated from Hamilton, Brantford, London, Toronto and Montreal direct to the steamers at Sarnia.

From Port Arthur and Fort William this service is offered on all railroads.

Thus package freight shipments will be speeded to their destinations with practically the same dispatch as full carload shipments.

You can save money by routing your less-than-carload-shipments via Northern Navigation Company.



Unloading Car with Electric Elevating Platform Trucks

RATES AND INFORMATION FROM ALL RAILWAY AGENTS

“Electric Trucks—As You Will Note—Save Handling Freight from Car to Boat”

Stop Over at Port Arthur



The Prince Arthur Hotel

Enjoy the Hospitality of the Prince Arthur Hotel

Stop off at the Twin Cities—Port Arthur and Fort William—and make your headquarters at the modern and charmingly located Prince Arthur Hotel. Splendid accommodation, cuisine and service—150 rooms. Rates \$4.50 a day up, American Plan.

Huge grain elevators, docks, parks, drives and public buildings lend their attraction while near at hand is a lake-studded wilderness offering splendid hunting and fishing, in season. Nipigon Lodge enables you to fish the far-famed waters of the Nipigon River. Quetico Park is a glorious forest and game reserve.

Holiday at Jasper National Park



Jasper Park Lodge on Beautiful Lac Beauvert

Jasper Park Lodge Centre of Canada's Greatest Mountain Playground

Set in 4,400 square miles of rugged Rocky Mountain grandeur, Jasper Park Lodge (rates \$7.50 a day up, American Plan—open from May 15th to Sept. 30th) offers unrivalled scope for a mountain holiday. Superb scenery, climbing with Swiss guides, golf, motoring, riding. Take the wonderful Athabaska Valley Drive to Ghost Glacier and Mount Edith Cavell. Accommodation for 425 guests.

For maps, descriptive folders and full information as to low tourist fares, write to the nearest representative of the Northern Navigation Company, or to

H. H. MELANSON, *General Passenger Traffic Manager*
Canadian National Railways
MONTREAL, CANADA

CANADIAN NATIONAL

The Largest Railway System in America



It gave me a real Thrill I felt I was piloting the Ship myself—

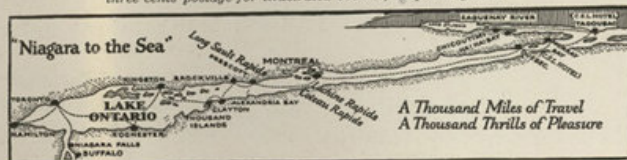
"A booming roar which came closer and closer. A quickening throb and quiver of the ship and then—we were racing through those raging waters, missing, it seemed, by inches, the snarling rocks on every side. 'I was so excited you would think I was piloting the ship.'"

The Rapids of the St. Lawrence—seven of them in all—furnish but one of many thrills provided by this "cruise of cruises" NIAGARA-TO-THE-SEA. Your steamer winds through the magnificent 1000 Islands; next comes the exhilarating descent of the Rapids—then the arrival at cosmopolitan Montreal.


Next day you're in Quebec—city of quaint old-world charm—and from here you can take the short ride to Ste. Anne de Beaupre, where, for 250 years, the townsfolk and the pilgrims have bowed together before its miracle working shrine.

As a fitting climax, you sail up the famous Saguenay River, where giant cloud-wrapped cliffs tower above you higher than Gibraltar, seeming to touch the very sky.

For complete information apply at the address below, or send three cents postage for illustrated booklet, map and guide.



Canada Steamship Lines Limited



The Ancient "Conteur de Contes" still relates the Romantic History of the Mighty Saguenay ~

The aged story-tellers of Quebec still relate how the Iroquois Indians spared the church at Tadousac, the first place of worship in America; how the heroes of Old France paddled the majestic Saguenay searching for their Eldorado; how stockades were held against the fierce red men of that long ago.

These and hundreds of other historic happenings were all staged in this land of the Giants—the Saguenay Canyon.

Through lake and river, rapids and canyons, the NIAGARA-TO-THE-SEA CRUISE conjures up these age-old scenes. You journey through the 1000 Islands, then run the Raging Rapids of the St. Lawrence. You visit cosmopolitan Montreal. In Quebec, you see the towering battlements of a quaint old city, rich in historic lore. Then the climax—the huge, cloud-wrapped "Capes of the Saguenay Canyon," soaring to immense heights from dark, mysterious waters.

For complete information apply at the address below, or send three cents postage for illustrated booklet, map and guide

Canada Steamship Lines Limited

